

## DENTAL IMAGING SYSTEMS

### RAPID PARALLELING KIT WITH BITE WING



RAPiD is a right angle positioning device that assures correct film/cone alignment and prevents "cone cutting". It can be used for anterior, posterior, and bite-wing x-ray exams using any brand and size (3, 2, 1, and 0) of dental film.

[Read More](#)

**CODE** 408560

**Price:** \$230.00

**Categories:** [Dental Imaging Systems](#), [Positioning Tools](#)

**Tags:** [dental](#), [positioning kit](#), [Smart](#)

### RAPID ENDODONTIC POSITIONER



Includes 1 Aiming Ring, 1 Indicator Arm, and 3 Bite Blocks.

[Read More](#)

**CODE** 40303

**Price:** \$58.00

**Categories:** [Dental Imaging Systems](#), [Positioning Tools](#)

**Tags:** [endodontic](#), [intraoral X-Ray](#), [positioning kit](#)



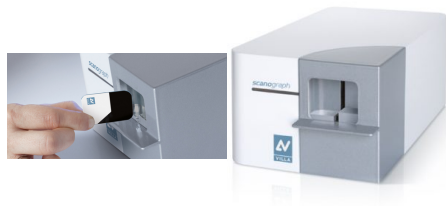
## DIGITAL ACQUISITION - CR

[Read More](#)

**CODE** N/A

**Price:** \$9,500.00

**Categories:** [Dental Equipment](#), [Dental Imaging Systems](#), [Intraoral X-ray](#)



## ENDOGRAPH DC INTRAORAL X-RAY

- **The innovation of a breakthrough user interface**

Endograph DC stands out completely from conventional intraoral units and makes a step further in the direction of user friendliness: its beautiful, shield-shaped control unit integrates a full-size LCD display showing the parameters efficiently organized in working areas and, for the first time, cleverly combining icons and tooth name. Additionally, the user interface can be customized in many languages, thus helping the operator to establish a communication channel with the patients. The levels of brightness and contrast can be adjusted, depending on the environment where the unit is being installed.

- **Wireless X-ray pushbutton**

Endograph DC provides wireless **Huge range of** control exposure. The remote



timer can be mounted as well out of the way of the beam, to combine settings and exposure out of the patient area.

## configurations

Endograph DC matches any practice, as it is available with 3 different sizes of extension arms that can be adapted to virtually any room. Upon request, Endograph DC can come also as a mobile unit mounted on trolley, particularly indicated in emergency contexts. Additionally, the standard availability of preset settings for films, Photostimulable Phosphor Plates (PSP), or Digital Detectors, allows the use with any receptor, from any manufacturer.

[Read More](#)

**CODE** N/A

**Price:** \$6,000.00

**Categories:** [Dental Equipment](#), [Dental Imaging Systems](#), [Intraoral X-ray](#)



## CBCT 3D IMAGING

Rotograph Evo 3D is a new dental imaging system with 3-in-1 functionality: Panoramic, Cephalometric, 3D.

This system is based on the highly regarded mechanical platform of the Rotograph Evo, adapted mechanically and electronically to operate with the latest "Cone Beam" technology allowing 3D reconstruction of the jaws.

Core of the Rotograph Evo 3D is the innovative Flat Panel Detector (FPD) using Amorphous Silicon technology associated with Cesium Iodide (CsI) scintillator.

Thanks to its peculiarity to work in either Panoramic or 3D modality, Pan images are acquired directly and not reconstructed from a volume, while the unit's 3D Field of View of 8,5×8,5 cm allows to obtain the entire dental status of the patient in a single exposure. The

Rotograph Evo 3D can also be integrated with a digital Cephalometric arm, or upgraded at a later stage in case of need, in order to expand applications to the orthodontic field.

[Read More](#)

**CODE** N/A

**Price:** \$125,000.00

**Categories:** [CBCT 3D](#), [Dental Imaging Systems](#)

